

FACTS AND FIGURES

The Fraunhofer ISI has been shaping the innovation landscape both in Germany and internationally since its foundation in 1972. Its contractual partners and clients comprise industrial and service enterprises as well as the public sector. More than 15 percent of its budget comes from contracts with industry. About 50 percent is generated from publicly financed national research projects; around 15 percent is commissioned by the European Union.

SELECTED CLIENTS



Federal Ministry of Education and Research
Federal Ministry of Economics and Technology
Federal Ministry for the Environment, Nature Conservation and Nuclear Safety



HEAD

Dr. Thomas Reiß
Head of the Competence Center
Emerging Technologies
Phone +49 721 6809-160
Fax +49 721 6809-315
thomas.reiss@isi.fraunhofer.de



Dr. Bernd Beckert and Dr. Axel Thielmann
Deputy Heads
Phone +49 721 6809-171 and -299
Fax +49 721 6809-315
bernd.beckert@isi.fraunhofer.de
axel.thielmann@isi.fraunhofer.de

The Competence Center consists of three Business Units:
Biotechnology and Life Sciences
Innovations in the Health System
Information and Communication Technologies

Fraunhofer Institute for Systems and Innovation Research ISI
Breslauer Strasse 48 | 76139 Karlsruhe | Germany

www.isi.fraunhofer.de

HOW TO FIND US

By car | On the A5 motorway, take the exit Karlsruhe-Durlach and drive towards Karlsruhe on the B 10 then follow the signs for Waldstadt.

By tram | From the main train station (Hauptbahnhof), take Tram 4 in the direction of Waldstadt to the tram stop Glogauer Strasse (approx. 25 minutes).

Fraunhofer Institute for Systems and Innovation Research ISI
Breslauer Strasse 48 | 76139 Karlsruhe | Germany
Phone +49 721 6809-0 | Fax +49 721 689-152

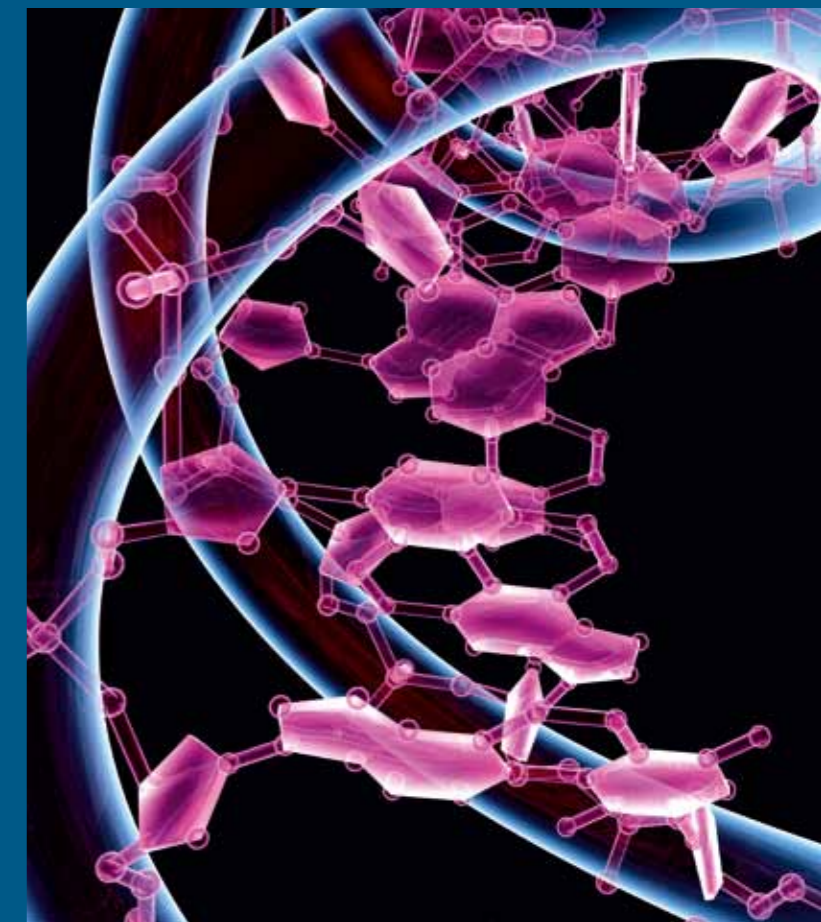
IMPRINT

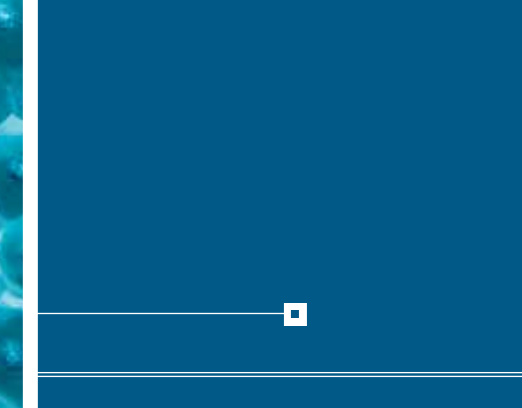
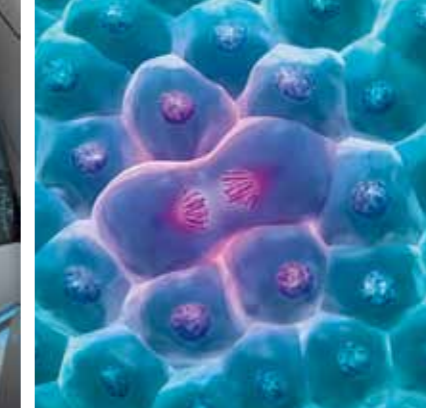
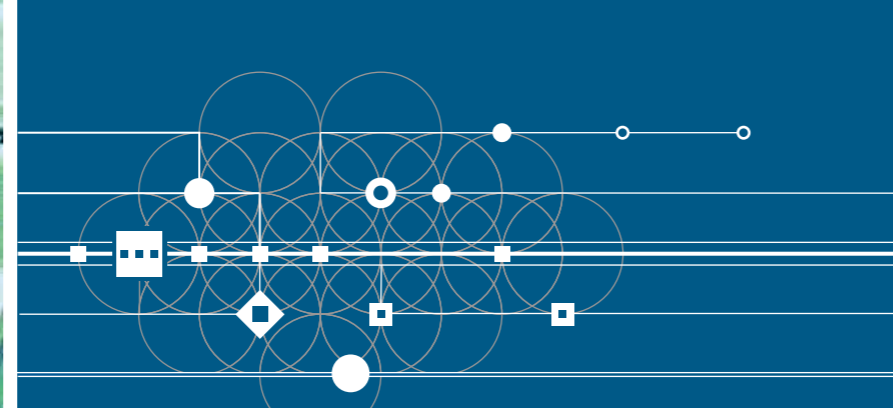
Publisher
Fraunhofer Institute for Systems and Innovation Research ISI
© Fraunhofer ISI 2013

Photos | Head, Fraunhofer ISI; children, Klaus Mellenthin
Other photos | Pasiëka, Carlson, Hurst/SPL/ Agentur Focus;
Swiss Nanoscience Institute, Basel; Schott

www.isi.fraunhofer.de

EMERGING TECHNOLOGIES





EMERGING TECHNOLOGIES

The Fraunhofer Institute for Systems and Innovation Research ISI analyzes the origins and impacts of innovations. We research the short- and long-term developments of innovation processes and the impacts of new technologies and services on society. On this basis, we are able to provide our clients from industry, politics and science with recommendations for action and perspectives for key decisions. Our expertise lies in a broad scientific competence as well as an interdisciplinary and systemic research approach.

OUR COMPETENCES

The Competence Center Emerging Technologies investigates how innovative technologies emerge, spread and influence each other. Similarly, we identify which economic, ecological and societal impacts the application of new technologies has. We analyze the scientific and economic potentials of technologies and evaluate their possible uses. In addition, we examine the

social and political framework conditions of the development and utilization of emerging technologies, as well as opportunities to implement necessary changes.

We develop decision-making criteria for our customers from science, politics and industry and thus shape the innovation processes initiated by the new technologies. Our work contributes towards shaping technology that creates societal, economic and ecological benefits.

Experts from the fields of economics and political science, engineering, biology, medicine, chemistry, physics, psychology, sociology and communication science collaborate in our interdisciplinary teams. They have many years experience of working in innovation research and utilize a comprehensive range of methods.

Our research is mainly focused on biotechnology, nanotechnology, health technologies, information and communication technologies, as well as new interdisciplinary approaches which result from the interactions of these technologies.

OUR BUSINESS UNITS

Biotechnology is increasingly permeating the fields of medicine and health, agriculture and food production, industrial manufacturing, analysis, environmental protection and energy technologies. The *Business Unit Biotechnology and Life Sciences* identifies current developments, examines their effects, and determines the position of Germany and Europe in international competition, as well as analyzing the influence of politics.

The health system is facing great challenges. Innovations are of particular significance in this research- and development-intensive service sector. The *Business Unit Innovations in the Health System* assesses new developments in this area with regard to their contribution towards societal goals. We include the often very contradictory interests of all involved stakeholder groups in these evaluations.

Information and communication technologies increasingly shape private and professional life and are decisive for innovations and competitive advantages in almost all areas of the economy. The *Business Unit Information and Communication Technologies* analyzes IT-based innovations as well as new media and puts forward proposals for necessary changes in the economic, political and legal framework conditions.

OUR RANGE OF SERVICES

- Investigation and evaluation of the generation and diffusion processes of emerging technologies and current trends
- Identification of technological potentials for new applications in industry
- Identification of barriers to the introduction and utilization of innovative technologies
- Analysis of the impact of emerging technologies on science, industry, society and the environment
- Prediction of possible consequences of emerging technologies as well as developing political and economic measures and options for action
- Design and evaluation of innovation and research promotion programs

SELECTED PROJECTS

- Preparation and demonstration of multi-KETs pilot lines actions
- Future economic impact of nanotechnologies, materials and production technologies
- Cloud Computing and Social Web
- Privacy and Security Issues in Emerging Technologies
- Accompanying Research Mobile Diagnostic Systems
- Accompanying Research Healthcare Regions of the Future